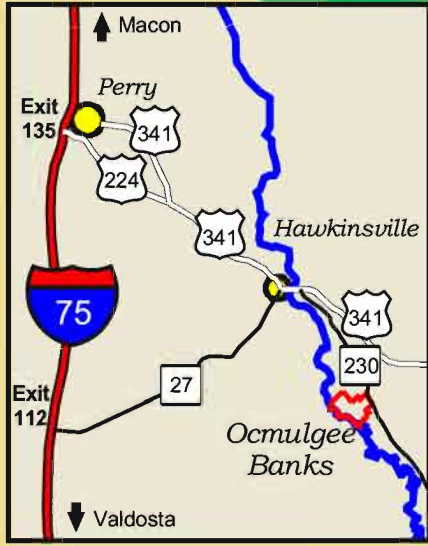
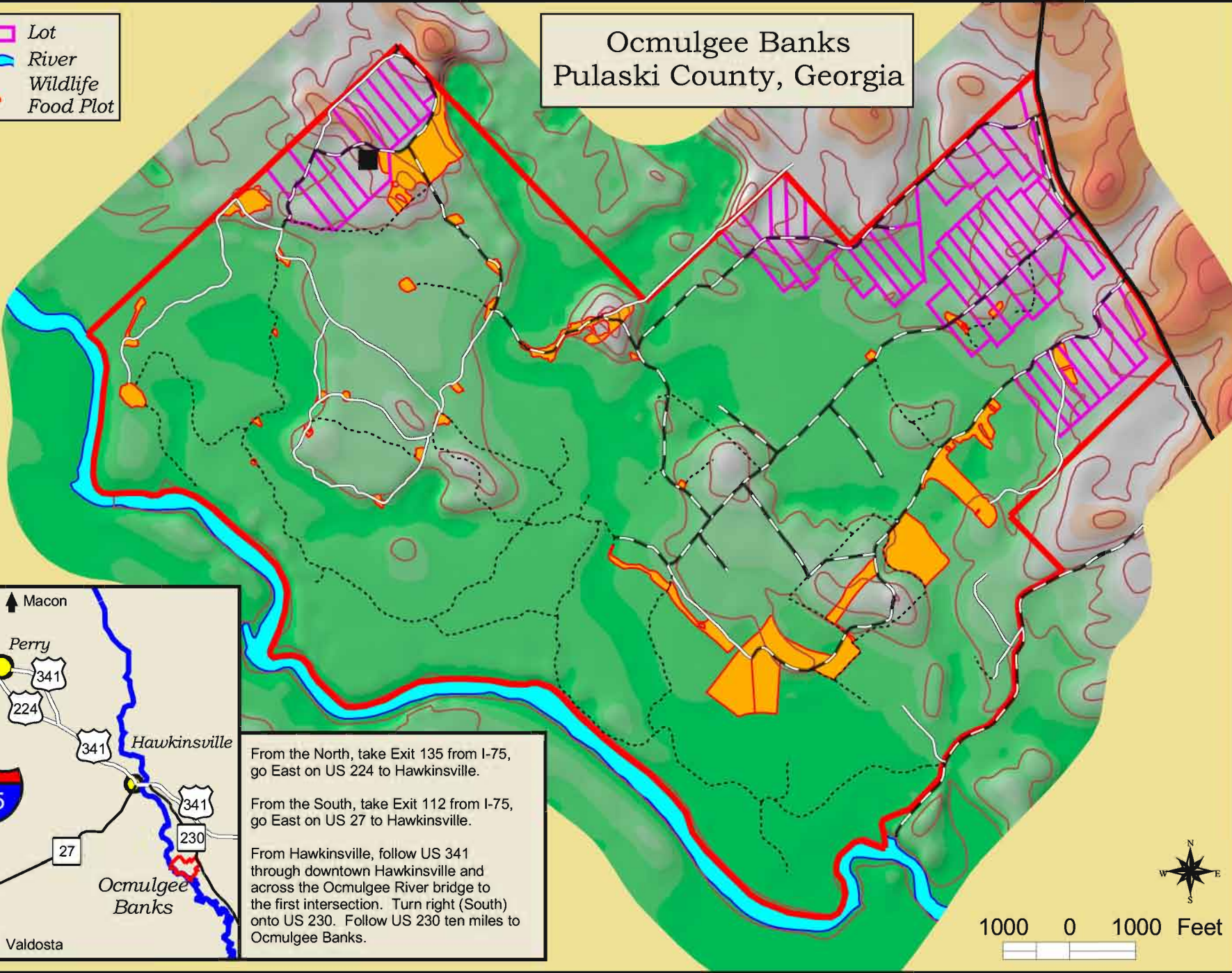


# Ocmulgee Banks Pulaski County, Georgia

Lot  
River  
Wildlife  
Food Plot



From the North, take Exit 135 from I-75, go East on US 224 to Hawkinsville.

From the South, take Exit 112 from I-75, go East on US 27 to Hawkinsville.

From Hawkinsville, follow US 341 through downtown Hawkinsville and across the Ocmulgee River bridge to the first intersection. Turn right (South) onto US 230. Follow US 230 ten miles to Ocmulgee Banks.

