

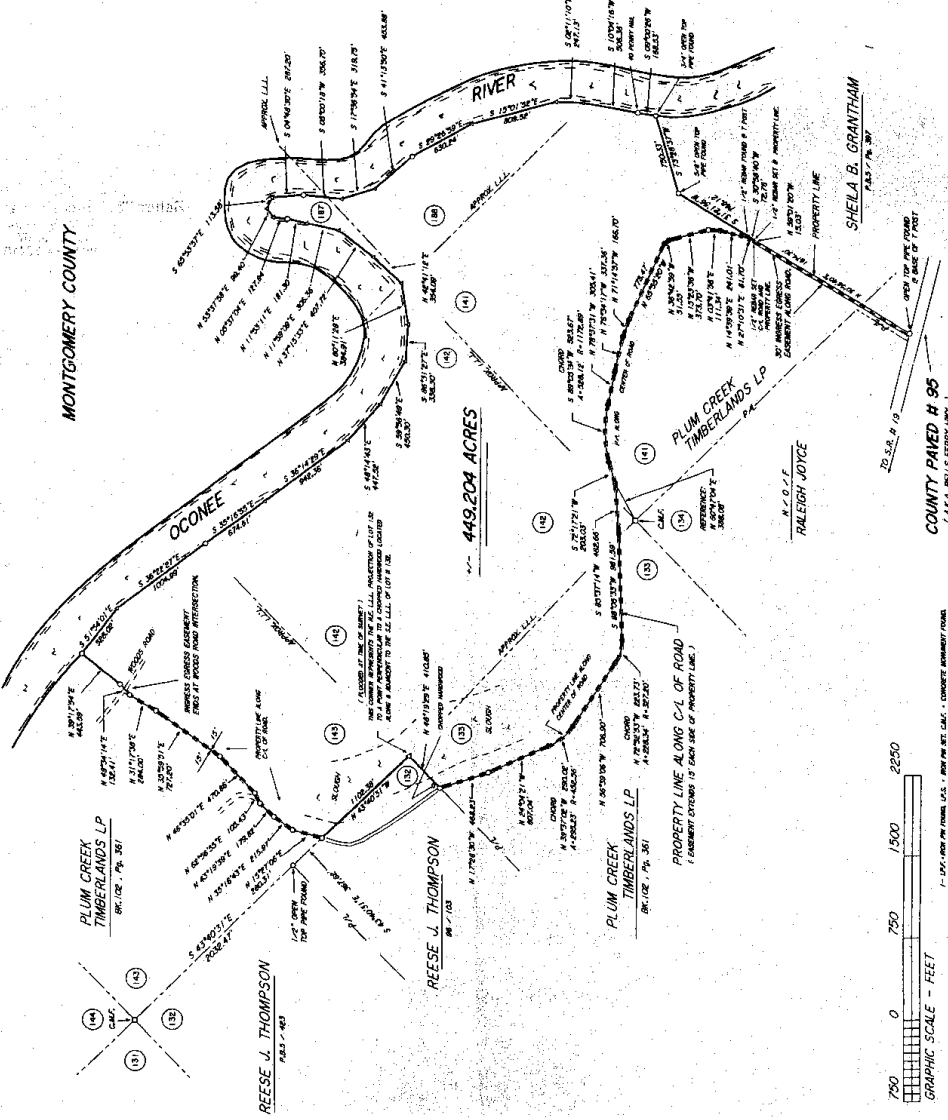


Survey of Orange Wheeler County
 CLERK'S OFFICE, SUPERIOR COURT
 Filed 12-17-17 20:41:41 P.M.
 Recorded 12-17-17 16:45:25 P.M.
 in Book 44185 Page 253
 C. L. B. M.
 Clerk of Superior Court



MAP RECORDATION - SURVEY REGISTRATION, 78 # 41
 GRADY BONEY
 CENTRAL SOUTH SURVEYING
 RT. 1, RHINE GA. 31077 PH-285-2941
 SURVEY FIRM
MONROE GOSS
 LOCATED IN LAND LOTS 133, 141, 142, 143, 147, 168
 6TH LAND DISTRICT
 WHEELER COUNTY, GEORGIA
 DATE: OCT. 20, 2004 SCALE: 1" = 330'-0"

MONTGOMERY COUNTY
 MONTGOMERY COUNTY
 MONTGOMERY COUNTY



NOTES:
 1 - THE FIELD DATA PRECISION IS 1 FOOT +/- 20.000 FEET FOR THIS SURVEY.
 2 - ALL DISTANCES ARE IN FEET.
 3 - ALL LINES POINTED OUT BY MONROE GOSS.



- - 1/4" IRON NAIL SET
- - 1/4" IRON NAIL SET
- - 1/2" IRON NAIL SET
- - 1/2" IRON NAIL SET
- - CONC. MARK FOUND
- - CONC. MARK FOUND

1 - ALL DISTANCES ARE IN FEET, UNLESS OTHERWISE SPECIFIED.
 2 - ALL DISTANCES ARE IN FEET, UNLESS OTHERWISE SPECIFIED.
 3 - ALL DISTANCES ARE IN FEET, UNLESS OTHERWISE SPECIFIED.
 4 - ALL DISTANCES ARE IN FEET, UNLESS OTHERWISE SPECIFIED.
 5 - ALL DISTANCES ARE IN FEET, UNLESS OTHERWISE SPECIFIED.
 6 - ALL DISTANCES ARE IN FEET, UNLESS OTHERWISE SPECIFIED.
 7 - ALL DISTANCES ARE IN FEET, UNLESS OTHERWISE SPECIFIED.
 8 - ALL DISTANCES ARE IN FEET, UNLESS OTHERWISE SPECIFIED.
 9 - ALL DISTANCES ARE IN FEET, UNLESS OTHERWISE SPECIFIED.
 10 - ALL DISTANCES ARE IN FEET, UNLESS OTHERWISE SPECIFIED.